

# Product Pricelist

U.S. & Canada Effective Date: March 3, 2025



Experience a safer  
and more open world



**SECURITRON**

**ASSA ABLOY**

# Product Pricelist

U.S. & Canada Effective Date: March 3, 2025

# Securitron Products

## Electromagnetic Locks

### Intelligent Maglocks®

M380E EcoMag®	2
M680E EcoMag®	2

### Delayed Egress Maglocks®

DEM680E EcoMag®	3
DEM680E EcoMag® Accessories	3

### Durable Maglocks®

M32	3
M62	4
DM62	4
M82	5
M32, M62, M82 Brackets	5
M32, M62, M82 Lock Housing	6
M32, M62, M82 Dress Covers	6
M32, M62, M82 Accessories	6
M38	7
M68	7
Universal Maglock® Accessories	7-9

### Recessed Maglocks®

M34R	9
------	---

### Shear Aligning Maglocks®

SAM, SAM2	9
-----------	---

## Cabinet Locks

MCL	10
M32-SS	10

## Specialty Locks

GL1 Gate Lock	10
MM15 Electromechanical Maglock®	11

## Electric Strikes

UNL, MUNL Electric Strikes	11
----------------------------	----

## Keypads & Card Readers

### Stand Alone Keypads

DK-12	12
-------	----

### Keypad Systems

DK-16	12
DK-26	12

### Aperio® Wireless Card Reader Kits

R100H	13
-------	----

## Push Buttons & Egress Devices

### Exit Motion Sensor

XMS2 Exit Motion Sensor	14
-------------------------	----

### Emergency Exit Buttons

EEB	14
-----	----

### Push Buttons

PB	14
PB2	15
PB3	15
PB4L	16
PB5	16

### Key Switches

MK Mortise Key Switches	17
KP-1 Tubular Key Switches	17

### Wave Switch

WSS Wave Sense Switch	18
-----------------------	----

### Capacitive Plate

SP-1 Capacitive Switch	18
------------------------	----

### Egress Bars

DSB	19
TSB	19
EMB	20

### Egress Handles

TSH	20
EMH	20

## Power

### Switching Power Supplies

AQD Series Power Supplies	21
AQL Series Power Supplies	23

### PoE Power Supplies

AQE Single-Port PoE	25
---------------------	----

### Plug-In Power Supplies

PSP Plug-In Power Supplies	25
----------------------------	----

### Power Supply Accessories

Additional Power Products	26
---------------------------	----

## Power Transfers

### Concealed Power Transfers

CEPT Concealed Electrical Power Transfers	27
SEPT Square-Cut Electrical Power Transfers	27
EPT Electrical Power Transfers	28

### Electric Hinges

EH Electric Hinges	28
--------------------	----

### Door Cords

TSB-C Door Cords	28
------------------	----

## Accessories

### Timers & Alarms

DT-7, PZ1, TM-2, TM-9 Timers & Alarms	29
---------------------------------------	----

### Door Position Monitoring

BA-DPA Door Prop Alarm Monitoring	29
DPS Door Position Switches	29
MSS Magnetic High Security Door Position Switch	30
LM Latch Monitor Status Switch	30

### Relays

RB-4, RLP Relay Boards & Logic Packs	30
--------------------------------------	----

## Warranties | Terms & Conditions

Warranties, Terms & Conditions	31-32
--------------------------------	-------

# Electromagnetic Locks

## M380E EcoMag® 600 lbs. Intelligent Magnalocks®

MODEL	DESCRIPTION	605	606	612	613E	628	629	630	BSP
M380EBD	BondSTAT, DPS	\$992	\$992	\$992	\$883	\$758	\$992	\$992	\$883
M380EBDX	BondSTAT, DPS, REX	\$1181	\$1181	\$1181	\$1071	\$945	\$1181	\$1181	\$1071



### How to Order *Specify quantity and the following information. Order related products separately.*

MODEL SERIES	ACCESSORY OPTIONS	FINISH OPTIONS	
<b>M380EBD</b>	<b>X</b>	<b>- 606</b>	
<b>M380EBD</b> 600 lbs with BondSTAT Monitor & Door Position Switch	<b>(blank)</b> No Accessory Options <b>X</b> PIR Request to Exit	<b>628/US28</b> Satin Aluminum Clear <b>605/US3</b> Bright Brass <b>606/US4</b> Satin Brass <b>612/US10</b> Satin Bronze	<b>613E</b> Dark Oxidized Satin Bronze <b>629</b> Bright Stainless Steel <b>630</b> Satin Stainless Steel <b>BSP</b> Black Suede Powder

## M680E EcoMag® 1,200 lbs. Intelligent Magnalocks®

MODEL	DESCRIPTION	605	606	612	613E	628	629	630	BSP
M680E	Standard Model					\$811			
M680EBD	BondSTAT, DPS	\$1099	\$1099	\$1099	\$991	\$864	\$1099	\$1099	\$991
M680EBDX	BondSTAT, DPS, REX	\$1289	\$1289	\$1289	\$1181	\$1050	\$1289	\$1289	\$1181



### How to Order *Specify quantity and the following information. Order related products separately.*

MODEL SERIES	MONITORING OPTIONS	ACCESSORY OPTIONS	FINISH OPTIONS	
<b>M680E</b>	<b>BD</b>	<b>X</b>	<b>- 606</b>	
<b>M680E</b> (1,200 lbs)	<b>(blank)</b> No Monitoring <b>BD</b> BondSTAT Monitor & Door Position Switch	<b>(blank)</b> No Accessory Options <b>X</b> PIR Request to Exit	<b>628/US28</b> Satin Aluminum Clear <b>605/US3</b> Bright Brass <b>606/US4</b> Satin Brass <b>612/US10</b> Satin Bronze	<b>613E</b> Dark Oxidized Satin Bronze <b>629</b> Bright Stainless Steel <b>630</b> Satin Stainless Steel <b>BSP</b> Black Suede Powder

## DEM680E EcoMag® 1,200 lbs. Delayed Egress Magnalocks®

MODEL	DESCRIPTION	605	606	612	613E	628	629	630	BSP
DEM680E	Standard Model (Supports HUGS)	\$1732	\$1732	\$1732	\$1623	\$1486	\$1732	\$1732	\$1623
DEM680E-CA15S	California 15 Second Compliant	\$1732	\$1732	\$1732	\$1623	\$1486	\$1732	\$1732	\$1623
DEM680E-CA30S	California 30 Second Compliant	\$1732	\$1732	\$1732	\$1623	\$1486	\$1732	\$1732	\$1623
DEM680E-CH	Chicago Compliant	\$1732	\$1732	\$1732	\$1623	\$1486	\$1732	\$1732	\$1623



### How to Order

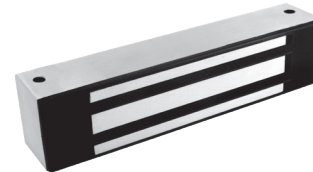
MODEL SERIES	TIMING OPTIONS	FINISH OPTIONS
<b>DEM680E</b>		<b>- 606</b>
Delayed Egress M680 EcoMag	(blank) Standard Model (Supports HUGS)	628 Satin Aluminum Clear
	-CA15S California 15 Second Compliant	605 Bright Brass
	-CA30S California 30 Second Compliant	606 Satin Brass
	-CH Chicago Compliant	612 Satin Bronze
		613E Dark Oxidized Satin Bronze
		629 Bright Stainless Steel
		630 Satin Stainless Steel
		BSP Black Suede Powder

### M680E Accessories

MODEL	DESCRIPTION	BK	CL
ASB-680	Aluminum Spacer Bracket for M680	\$160	\$144
CWB-680	Concrete/Wood Bracket for M680	\$160	\$144
GDHB-680	Glass Door Header Bracket for M680	\$175	\$160

## M32 600 lbs. Durable Magnalocks®

ITEM	DESCRIPTION	PRICE
M32	No Monitoring	\$460
M32B	BondSTAT Monitor	\$588
M32BD	BondSTAT Monitor & Door Position Switch	\$660
M32D	Door Position Switch	\$543
M32F	Face Drilled, No Monitoring	\$460
M32FB	Face Drilled, BondSTAT Monitor	\$588
M32FBD	Face Drilled, BondSTAT Monitor & Door Position Switch	\$660
M32FD	Face Drilled, Door Position Switch	\$543



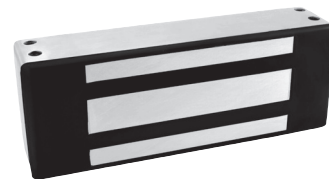
### How to Order Specify quantity and the following information. Order related products separately.

MODEL SERIES	MOUNTING METHOD	MONITORING OPTIONS	STRIKE PLATE OPTIONS
<b>M32</b>		<b>BD</b>	<b>-SS</b>
M32 (600 lbs)	(blank) Direct Mount F Face Drilled	(blank) No Monitoring B BondSTAT Monitor D Door Position Switch BD BondSTAT Monitor & Door Position Switch	(blank) Standard Strike SS Split Strike (Add \$150)* SASM Shock Absorbing Strike Mount (Add \$101)

\*D and BD monitoring options not available with (SS) Split Strike option.

### M62 1,200 lbs. Durable Magnalocks®

ITEM	DESCRIPTION	PRICE
M62	No Monitoring	\$588
M62B	BondSTAT Monitor	\$716
M62BD	BondSTAT Monitor & Door Position Switch	\$788
M62D	Door Position Switch	\$672
M62F	Face Drilled	\$588
M62FB	Face Drilled, BondSTAT Monitor	\$716
M62FBD	Face Drilled, BondSTAT Monitor & Door Position Switch	\$788
M62FD	Face Drilled, Door Position Switch	\$672
M62G	Gate Conduit	\$627
M62GB	Gate Conduit, BondSTAT Monitor	\$756
M62GBD	Gate Conduit, BondSTAT Monitor & Door Position Switch	\$830
M62GD	Gate Conduit, Door Position Switch	\$714
M62FG	Face Drilled, Gate Conduit	\$626
M62FGB	Face Drilled, Gate Conduit, BondSTAT Monitoring	\$753
M62FGBD	Face Drilled, Gate Conduit, BondSTAT Monitoring & Door Position Switch	\$828
M62FGD	Face Drilled, Gate Conduit, Door Position Switch	\$716
M62FG-EX	Face Drilled, Gate Conduit for Hazardous Locations	\$626
M62FGB-EX	Face Drilled, Gate Conduit with BondSTAT Monitoring for Hazardous Locations	\$732
M62FGBD-EX	Face Drilled, Gate Conduit with BondSTAT Monitoring & Door Position Switch for Hazardous Locations	\$804
M62FGD-EX	Face Drilled, Gate Conduit with Door Position Switch for Hazardous Locations	\$716
M62G-EX	Gate Conduit for Hazardous Locations	\$627
M62GB-EX	Gate Conduit with BondSTAT Monitoring for Hazardous Locations	\$734
M62GBD-EX	Gate Conduit with BondSTAT Monitoring & Door Position Switch for Hazardous Locations	\$830
M62GD-EX	Gate Conduit with Door Position Switch for Hazardous Locations	\$692



#### How to Order *Specify quantity and the following information. Order related products separately.*

MODEL SERIES	MOUNTING METHOD	MONITORING OPTIONS	STRIKE PLATE OPTIONS
M62	FG	BD	-SS
M62 (1200 lbs)	(blank) Direct Mount F Face Drilled G Gate Conduit	(blank) No Monitoring B BondSTAT Monitor D Door Position Switch BD BondSTAT Monitor & Door Position Switch	(blank) Standard Strike OS Offset Strike SS Split Strike (Add \$150)* SASM Shock Absorbing Strike Mount (Add \$101) EX Hazardous Locations
<i>*D and BD monitoring options not available with (SS) Split Strike option.</i>			

### DM62 Double 1,200 lbs. Durable Magnalocks®

ITEM	DESCRIPTION	PRICE
DM62	12/24 VDC	\$1259
DM62-OS	12/24 VDC, Offset Strike	\$1259
DM62B	12/24 VDC, MBS	\$1534
DM62B-OS	12/24 VDC, MBS, Offset Strike	\$1534
DM62BD	12/24 VDC, MBS, DPS	\$1694
DM62D	12/24 VDC, DPS	\$1448



#### Accessories

ITEM	DESCRIPTION	PRICE
ASCWB-DM62CL	Alum 1-1/2" Spacer — Concrete/Wood Bracket, DM62, Clear	\$218

#### How to Order

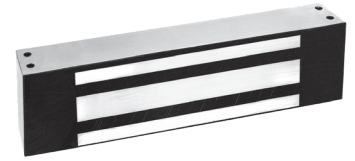
*Specify quantity and the following information. Order related products separately.*

MODEL SERIES	MONITORING OPTIONS	STRIKE PLATE OPTIONS
DM62	BD	- OS
DM62	(blank) No Monitoring B BondSTAT Monitor D Door Position Switch	(blank) Standard Strike OS Offset Strike

Updated 2/25/25 Printed in the U.S.A. Patent pending and/or patent [www.assaabloydss.com/patents](http://www.assaabloydss.com/patents)

## M82 1,800 lbs. Durable Magnalocks®

ITEM	DESCRIPTION	PRICE
M82B	BondSTAT Monitor	\$823
M82BD	BondSTAT Monitor & Door Position Switch	\$898
M82FB	Face Drilled, BondSTAT Monitor	\$823
M82FBD	Face Drilled, BondSTAT Monitor & Door Position Switch	\$898
M82GB	Gate Conduit, BondSTAT Monitor	\$867
M82GBD	Gate Conduit, BondSTAT Monitor & Door Position Switch	\$939
M82FGB	Face Drilled, Gate Conduit, BondSTAT Monitor	\$868
M82FGBD	Face Drilled, Gate Conduit, BondSTAT Monitor & Door Position Switch	\$941



### How to Order

Specify quantity and the following information. Order related products separately.

MODEL SERIES	MOUNTING METHOD	MONITORING OPTIONS	STRIKE PLATE OPTIONS
<b>M82</b>	<b>FG</b>	<b>BD</b>	<b>-SS</b>
M82 (1800 lbs)	(blank) Direct Mount F Face Drilled G Gate Conduit	B BondSTAT Monitor BD BondSTAT Monitor & Door Position Switch	(blank) Standard Strike OS Offset Strike SS Split Strike (Add \$150)* SASM Shock Absorbing Strike Mount (Add \$101)

\*BD monitoring options not available with (SS) Split Strike option.

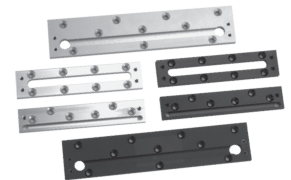
## Aluminum Frame Spacer Bracket

MODEL	DESCRIPTION	BK	CL
ASB-32	For M32	\$79	\$59
ASB-62	For M62	\$80	\$59
ASB-82	For M82	\$111	\$95
ASB-680	Aluminum Spacer Bracket for M680	\$160	\$144



## Concrete/Wood Bracket

MODEL	DESCRIPTION	BK	CL
CWB-32	For M32	\$89	\$75
CWB-62	For M62	\$99	\$84
CWB-82	For M82	\$120	\$105
CWB-680	Concrete/Wood Bracket for M680	\$160	\$144



## Adjustable Z-Bracket

MODEL	DESCRIPTION	BK	CL	SS
ZA-32/62	For M32 and M62	\$223	\$206	\$233
ZA-82	For M82	\$269	\$247	\$279



### How to Order

Specify quantity and the following information. Order related products separately.

BRACKET TYPE	MODEL SERIES	STRIKE PLATE OPTIONS
<b>ASB</b>	<b>-32</b>	<b>BK</b>
ASB Aluminum Frame Spacer Bracket	32	BK Black Anodized
CWB Concrete/Wood Bracket	62	CL Clear Anodized
ZA Adjustable Z-Bracket	82	SS Satin Stainless

NOTE: SS only available with ZA Bracket

## Lock Housing

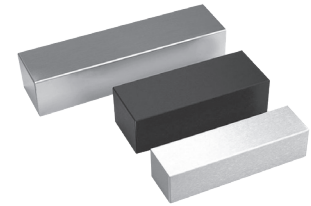
ITEM	DESCRIPTION	PRICE
HHD-32	Lock Housing for M32 - Dbl. Horizontal	\$1393
HHD-62	Lock Housing for M62 - Dbl. Horizontal	\$1500
HHD-82	Lock Housing for M82 - Dbl. Horizontal	\$1607
HHSL-32	Lock Housing for M32 - SLR Horizontal	\$1244
HHSL-62	Lock Housing for M62 - SLR Horizontal	\$1153
HHSR-32	Lock Housing for M32 - SRR Horizontal	\$1244
HHSR-62	Lock Housing for M62 - SRR Horizontal	\$1153
HVD-32	Lock Housing for M32 - Dbl. Vertical	\$1428
HVD-62	Lock Housing for M62 - Dbl. Vertical	\$1530
HVD-82	Lock Housing for M82 - Dbl. Vertical	\$1632

NOTE: HHD Max Length 96", HHSL Max Length 48", HHSR Max Length 48", HVD Max Length 96"



## Dress Covers

MODEL	DESCRIPTION	BK	BP	CL	SP
DC-32	For M32	\$61	\$157	\$60	\$147
DC-62	For M62	\$61	\$157	\$60	\$147
DC-82	For M82	\$76	\$164	\$68	\$156
DDC-32	Double — For M32	\$162		\$162	
DDC-62	Double — For M62	\$162		\$162	



## How to Order

Specify quantity and the following information. Order related products separately.

DRESS COVER	MODEL	FINISH
DC	- 32	BK
DC Dress Cover	32	BK Black Anodized
DDC Double Dress Cover	62	BP Brass Polished
(available in models 32 & 62 in BK and CL finishes only)	82	CL Clear Anodized
		SP Stainless Polished

## M32, M62, M82 Accessories

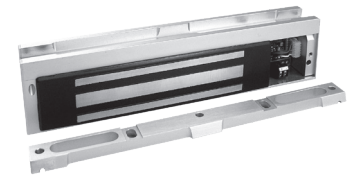
ITEM	DESCRIPTION	PRICE
AOS-62	Offset Strike Plate for M62	\$156
AOS-62D	Offset Strike Plate for M62D	\$192
AOS-82	Offset Strike Plate for M82	\$204
APS-32	Strike Plate for M32	\$146
APS-62	Strike Plate for M62	\$164
APS-82	Strike Plate for M82	\$190
ASS-32	Strike Plate for M32— Split Set with Fasteners & Sex Bolt	\$197
ASS-62	Strike Plate for M62— Split Set with Fasteners & Sex Bolt	\$231
ASS-82	Strike Plate for M82— Split Set with Fasteners & Sex Bolt	\$257
EASB-250	Energy Absorbing Bolt — 1/4" Spacer Kit	\$62
EASB-32	Energy Absorbing Sex Bolt for M32	\$324
EASB-62	Energy Absorbing Sex Bolt for M62	\$477
EASB-82	Energy Absorbing Sex Bolt for M82	\$521
MTK-32-62	Magnetic, metal marking template that streamlines installation for the M32 and M62 electromagnetic locks	\$96
SASM	Shock Absorbing Strike Mount for M32, M62, M82	\$101
SB-1	Sex Bolt Replacement, Clear	\$19
SB-1-03	Sex Bolt Replacement, Polished Brass	\$42
SB-1-10B	Sex Bolt Replacement, Oil-Rubbed Bronze	\$42
TDK-1	Thick Door Kit	\$37

Updated 2/25/25 Printed in the U.S.A. Patent pending and/or patent [www.assaabloydss.com/patents](http://www.assaabloydss.com/patents)



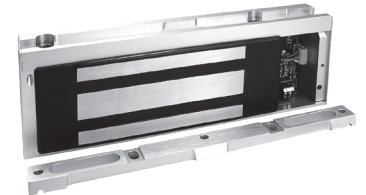
### M38 600 lbs. Durable Magnalocks®

ITEM	DESCRIPTION	PRICE
M38	12/24 VDC	\$608
M38D	12/24 VDC, DPS	\$708
M38DL	12/24 VDC, DPS, LED	\$750
M38DLS	12/24 VDC, DPS, LED, Senstat	\$851
M38DLST	12/24 VDC, DPS, LED, Senstat, Tamper	\$922
M38DS	12/24 VDC, DPS, Senstat	\$806
M38LS	12/24 VDC, LED, Senstat	\$750



### M68 1,200 lbs. Durable Magnalocks®

ITEM	DESCRIPTION	PRICE
M68	12/24 VDC	\$757
M68D	12/24 VDC, DPS	\$856
M68DL	12/24 VDC, DPS, LED	\$899
M68DLS	12/24 VDC, DPS, LED, Senstat	\$1000
M68DLST	12/24 VDC, DPS, LED, Senstat, Tamper	\$1071
M68DS	12/24 VDC, DPS, Senstat	\$954
M68LS	12/24 VDC, LED, Senstat	\$899
M68S	12/24 VDC, Senstat	\$856



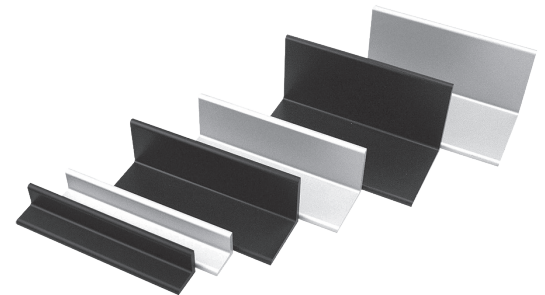
### M38, M68 Accessories

ITEM	DESCRIPTION	PRICE
TJ-38CL	Clear Anodized In-Swing Door Kit for M38	\$259
TJ-68CL	Clear Anodized In-Swing Door Kit for M68	\$259

## Universal Magnalock Accessories

### Header Extension Brackets

MODEL	DESCRIPTION	BK	CL
HEB-1xx-8	1" x 1" x 8"	\$67	\$56
HEB-1xx-12	1" x 1" x 12"	\$79	\$61
HEB-2xx-8	2" x 2" x 8"	\$87	\$73
HEB-2xx-12	2" x 2" x 12"	\$90	\$79
HEB-3xx-8	3" x 3" x 8"	\$100	\$89
HEB-3xx-12	3" x 3" x 12"	\$112	\$94
HEB-3G	3" x 3" x 8" for Glass Door		\$107



### How to Order

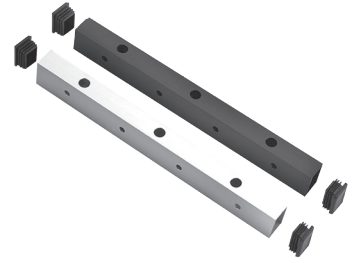
Specify quantity and the following information. Order related products separately.

MODEL	SIZE	FINISH	SIZE
<b>HEB</b>	<b>-1</b>	<b>BK</b>	<b>-8</b>
HEB Header	1 1" x 1"	BK Black Anodized	8 8" Length
Extension	2 2" x 2"	CL* Clear Anodized	12 12" Length
	3 3" x 3"		

\*HEB-3G only available in Clear Anodized

## Universal Header Brackets

MODEL	DESCRIPTION	BK	CL
UHB-xx-8	8" Header Bracket	\$116	\$98
UHB-xx-12	12" Header Bracket	\$161	\$141



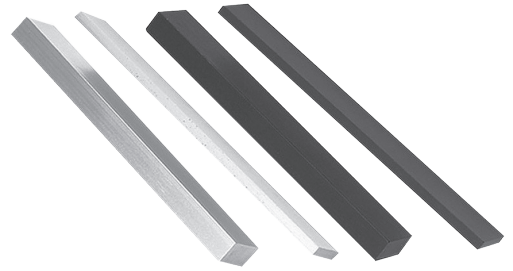
### How to Order

Specify quantity and the following information. Order related products separately.

MODEL	FINISH	SIZE
UHB	BK	-8
UHB Universal Header Extension	BK Black Anodized	8 8" Length
	CL Clear Anodized	12 12" Length

## Stop Filler Plates

MODEL	DESCRIPTION	BK	CL
SFP-1/2-xx-8	1/2" x 1-1/4" x 8"	\$53	\$44
SFP-1/2-xx-12	1/2" x 1-1/4" x 12"	\$59	\$47
SFP-1/4-xx-8	1/4" x 1-1/4" x 8"	\$53	\$44
SFP-1/4-xx-12	1/4" x 1-1/4" x 12"	\$59	\$47
SFP-3/8-xx-8	3/8" x 1-1/4" x 8"	\$53	\$44
SFP-3/8-xx-12	3/8" x 1-1/4" x 12"	\$59	\$47
SFP-5/8-xx-8	5/8" x 1-1/4" x 8"	\$53	\$44
SFP-5/8-xx-12	5/8" x 1-1/4" x 12"	\$59	\$47



### How to Order

Specify quantity and the following information. Order related products separately.

MODEL	SIZE	FINISH	SIZE
SFP	-1/2	BK	-8
SFP Stop Filler Plate	1/2 1/2" x 1-1/4"	BK Black Anodized	8 8" Length
	1/4 1/4" x 1-1/4"	CL Clear Anodized	12 12" Length
	3/8 3/8" x 1-1/4"		
	5/8 5/8" x 1-1/4"		

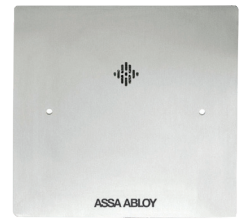
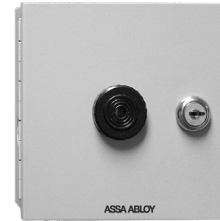
## Additional Accessories

ITEM	DESCRIPTION	PRICE
AKG	Adhesive Kit for GDB permanently bonds to the glass using a special industrial adhesive	\$231
DCP-12X3	Dress Cover Plate, 12" x 3" for larger strikes	\$43
GDB	Glass Door Bracket permits strike plate installation on a solid glass door	\$91
IK	This convenient, cost effective kit contains everything an installer needs to achieve professional, high quality Magnetic Lock installations.	\$744



## XDT Exit Delay Timer

ITEM	DESCRIPTION	PRICE
BA-XDT-12	12 VDC Boxed Alarm & Door Label Exit Delay Timer	\$324
BA-XDT-24	24 VDC Boxed Alarm & Door Label Exit Delay Timer	\$324
FA-XDT-12	12 VDC, Flush Mount with Alarm & Door Exit Delay Timer	\$324
FA-XDT-24	24 VDC, Flush Mount with Alarm & Door Exit Delay Timer	\$324
XDT-12	12 VDC Exit Delay Timer	\$215
XDT-24	24 VDC Exit Delay Timer	\$201



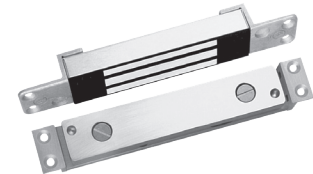
## M34R 500 lbs. Recessed Magnalocks®

ITEM	DESCRIPTION	PRICE
M34R	12/24 VDC, Recessed	\$521
M34RB	12/24 VDC, Recessed, MBS	\$657
M34RBD	12/24 VDC, Recessed, MBS, DPS	\$736
M34RD	12/24 VDC, Recessed, DPS	\$614



## SAM 1,200 lbs. Shear Aligning Magnalocks®

ITEM	DESCRIPTION	PRICE
SAM	12/24 VDC, Shear Aligning	\$1169
SAMB	12/24 VDC, Shear Aligning, MBS	\$1275
SAMBD	12/24 VDC, Shear Aligning, MBS, DPS	\$1347
SAMD	12/24 VDC, Shear Aligning, DPS	\$1246
SAMN	12/24 VDC, Shear Aligning with Narrow Strike Plate	\$1182



## SAM Accessories

ITEM	DESCRIPTION	PRICE
SMLS	Surface Mount Housing Lock — Shear	\$225
SMSS	Surface Mount Housing Strike — Shear	\$218
SWB-03	SAM Wood Bracket — Brass Polished	\$306
SWB-10B	SAM Wood Bracket — Oil Rubbed Bronze	\$308
SWB-26D	SAM Wood Bracket — Satin Stainless	\$121

NOTE: Not for use with SAM2-24 or SAMC2-24

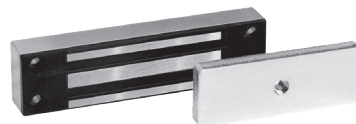
## SAM2-24 600 lbs. Mini Shear Magnalocks®

ITEM	DESCRIPTION	PRICE
SAM2-24	24 VDC, Shear Aligning	\$885
SAM2C-24	24 VDC, Shear Aligning, MBS	\$932

# Cabinet Locks

## MCL 180 lbs. Cabinet Magnalocks®

ITEM	DESCRIPTION	PRICE
MCL-24	24 VDC	\$289



## M32-SS 600 lbs. Cabinet Magnalocks®

ITEM	DESCRIPTION	PRICE
M32-SS	Standard — No Monitoring, Split Strike	\$610
M32B-SS	BondSTAT monitoring, Split Strike	\$738



# Specialty Locks

## GL1 Specialty Gate Locks

ITEM	DESCRIPTION	PRICE
GL1-FL	Gate Lock, 12/24 VDC, Standard Fail Locked	\$482
GL1-FLM	Gate Lock, 12/24 VDC, Fail Locked Monitored	\$498
GL1-FS	Gate Lock, 12/24 VDC, Standard Fail Safe	\$482
GL1-FSM	Gate Lock, 12/24 VDC, Fail Safe Monitored	\$498

\*Cylinder not available for Fail-Safe Version "FS" or "FSM"

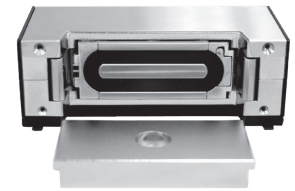


## GL1 Accessories

ITEM	DESCRIPTION	PRICE
FMB9-4	Post Shim Kit for Flex Mount Brackets — (Set of 4)	\$32
FMK-SL	Flex Mount Kit for Sliding Gate	\$146
FMK-SW	Flex Mount Kit for Swinging Gate	\$181
GMC	Gate Lock Mortise Cylinder (for use with FL Models only)	\$48

## MM15 Specialty Electromechanical Magnalock

ITEM	DESCRIPTION	PRICE
MM15	12/24 V, AC/DC	\$649
MM15DT	12/24 V, AC/DC, DPS, Tamper Switch	\$794
MM15G	12/24 V, AC/DC, Gate Conduit	\$721
MM15GDT	12/24 V, AC/DC, Gate Conduit, DPS, Tamper Switch	\$835



## MM15 Dress Cover

MODEL	BK	BP	BS
DC-MM15	\$54	\$135	\$147

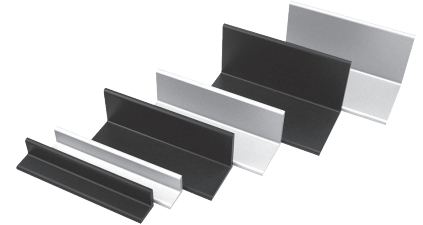


## MM15 Tamper Shield

ITEM	PRICE
MM15-TS	\$54

## MM15 Brackets

MODEL	DESCRIPTION	BK	CL
HEB-1xx-MM15	1" Header Extension Bracket	\$66	\$50
HEB-2xx-MM15	2" Header Extension Bracket	\$66	\$50
HEB-3xx-MM15	3" Header Extension Bracket	\$66	\$50
SFP-1/2xxMM15	1/2" Stop Filler Plate	\$57	\$44
SFP-3/8xxMM15	3/8" Stop Filler Plate	\$57	\$44
SFP-5/8xxMM15	5/8" Stop Filler Plate	\$57	\$44
Z-MM15	Z-Bracket	\$157	\$138



**How to Order** *Specify quantity and the following information. Order related products separately.*

MODEL	SIZE	FINISH	MODEL	SIZE	FINISH
<b>HEB</b>	<b>-1</b>	<b>BK-MM15</b>	<b>SFP</b>	<b>-1/2</b>	<b>BKMM15</b>
HEB Header Extension	1 1" x 1" 2 2" x 2" 3 3" x 3"	BK-MM15 Black Anodized CL-MM15 Clear Anodized	SFP Stop Filler Plate	1/2 1/2" x 1-1/4" x 6" 3/8 3/8" x 1-1/4" x 6" 5/8 5/8" x 1-1/4" x 6"	BKMM15 Black Anodized CLMM15 Clear Anodized

# Electric Strikes

## Securitron UNL Electric Strike for Latchbolt Locks

ITEM	DESCRIPTION	PRICE
UNL-12	UnLatch for Cylindrical Locks - 12VDC	\$614
UNL-24	UnLatch for Cylindrical Locks - 24VDC	\$614
UNL-12-10B	UnLatch for Cylindrical Locks- 12VDC, Oil Rubbed Bronze	\$683
UNL-24-10B	UnLatch for Cylindrical Locks- 24VDC, Oil Rubbed Bronze	\$683



## Securitron MUNL Electric Strike for Latchbolt Locks

ITEM	DESCRIPTION	PRICE
MUNL-12	UnLatch for Mortise Lock- 12VDC	\$854
MUNL-24	UnLatch for Mortise Lock- 24VDC	\$854
MUNL-12-10B	UnLatch for Mortise Lock- 12VDC, Oil Rubbed Bronze	\$917
MUNL-24-10B	UnLatch for Mortise Lock- 24VDC, Oil Rubbed Bronze	\$917
MUNL-12-US3	UnLatch for Mortise Lock- 12VDC, Bright Brass	\$875
MUNL-24-US3	UnLatch for Mortise Lock- 24VDC, Bright Brass	\$875

## Accessories

ITEM	DESCRIPTION	PRICE
FSUNL-12	Fail Safe/Fail Secure UnLatch Module, 12 VDC	\$166
FSUNL-24	Fail Safe/Fail Secure UnLatch Module, 24 VDC	\$166

# Keypads & Card Readers

## DK-12 Stand Alone Keypad

ITEM	DESCRIPTION	PRICE
DK-12	Digital Keypad System with Illuminated keys — Single Gang	\$233



## DK-16 Keypad System

ITEM	DESCRIPTION	PRICE
DK-16	Keypad and Controller — Indoor, Single Gang	\$508
DK-16P	Keypad only — Indoor, Single Gang	\$276



## DK-26 Keypad System

MODEL	DESCRIPTION	BK	SS
DK-26	Keypad and Controller — Narrow Stile	\$519	\$504
DK-26P	Keypad only — Narrow Stile	\$275	\$257



## R100 Aperio® Card Reader Factory Paired with Wiegand Hub

ITEM	DESCRIPTION	PRICE
R100H-IPS-B	Aperio® Wireless Card Reader Factory Paired with AH20 (1:1) Wiegand Hub, Black	\$997



## Accessories

ITEM	DESCRIPTION	PRICE
R100-DPK	R100 Aperio® Wireless Card Reader Dress Cover, Aluminum	\$30
ACC10	RFID test credentials	\$40
APD10USB	Used to configure both the Aperio product and/or Aperio hubs via the Program Application software.	\$700

## R100 Demo Mount

ITEM	DESCRIPTION	PRICE
DEMO-R100-IPS-B	R100 Aperio® Wireless Card Reader Demo Mount With HID multiCLASS SE Card Technology, HID NFC Mobile Access Enabled	\$1057



# Push Buttons & Egress Devices

## XMS2 Request to Exit Motion Sensor

ITEM	DESCRIPTION	PRICE
XMS2	Passive Infrared Request to Exit Device	\$273



## EEB Emergency Exit Push Buttons

ITEM	DESCRIPTION	PRICE
EEB2	Momentary, SPDT, Single Gang, Green/Red/Blue/Handicap, 30 Sec. Timer	\$169
EEB3N	Momentary, SPDT, Narrow, Green/Red, 30 Sec. Timer	\$169



## Accessories

ITEM	DESCRIPTION	PRICE
PB2-LK	2" Button, Illumination Kit for PB2E, PB5E, EEB2 Series Push Button	\$36
PB3-LK	Illumination Kit, Green/Red for PB3E/EEB3N Series	\$42

## PB Exit Push Buttons

ITEM	DESCRIPTION	PRICE
PB	1 1/2" button, Illuminated, Momentary, DPST, Single Gang, Green/Red Lens	\$187
PBA	1 1/2" button, Illuminated, Alternate, DPST, Single Gang, Green/Red Lens	\$187



## Accessories

ITEM	DESCRIPTION	PRICE
WBB	Wall Mounted, Weatherized, Single Gang Box	\$57
WCC	Wall Mounted, Weather Cover, Single Gang Box	\$78



## PB2 Exit Push Buttons

ITEM	DESCRIPTION	PRICE
PB2	2" Button, Illuminated, Momentary, Single Gang, Green/Red/Handicap	\$120
PB22	2" Button, Illuminated, Momentary, DPDT, Single Gang, Green/Red/Handicap	\$187
PB2E	2" Button, Non-Illuminated, Momentary, Single Gang, SPDT, Green/Red/Handicap	\$88

## Accessories

ITEM	DESCRIPTION	PRICE
PB2-LK	2" Button, Illumination Kit for PB2E, PB5E, EEB2 Series Push Button	\$36
WBB	Wall Mounted, Weatherized, Single Gang Box	\$57
WCC	Wall Mounted, Weather Cover, Single Gang Box	\$78



## PB3 Push Buttons

ITEM	DESCRIPTION	PRICE
PB3	3/4" Rectangle Button, Illuminated, Momentary, DPST/DPDT, Single Gang, Green/Red Lens	\$128
PB3A	3/4" Rectangle Button, Illuminated, Alternate, DPST/DPDT, Single Gang, Green/Red Lens	\$128
PB3AN	3/4" Rectangle Button, Illuminated, Alternate, DPST/DPDT, Narrow, Green/Red Lens	\$128
PB3E	3/4" Rectangle Button, Non-Illuminated, Momentary, DPST/DPDT, Single Gang, Green/Red Lens	\$97
PB3EA	3/4" Rectangle Button, Non-Illuminated, Alternate, DPST/DPDT, Single Gang, Green/Red Lens	\$97
PB3EAN	3/4" Rectangle Button, Non-Illuminated, Alternate, DPST/DPDT, Narrow, Green/Red Lens	\$97
PB3EAR	3/4" Rectangle Button, Non-Illuminated, Remote, Alternate, DPST/DPDT, Surface Mount Green/Red Lens	\$97
PB3EN	3/4" Rectangle Button, Non-Illuminated, Momentary, DPST/DPDT, Narrow, Green/Red Lens	\$97
PB3ER	3/4" Rectangle Button, Non-Illuminated, Remote, Momentary, DPST/DPDT, Surface Mount Green/Red Lens	\$97
PB3N	3/4" Rectangle Button, Illuminated, Momentary, DPST/DPDT, Narrow, Green/Red Lens	\$128

## Accessories

ITEM	DESCRIPTION	PRICE
PB3-LK	Illumination Kit, Green/Red for PB3E/EEB3N Series	\$42
WBB	Wall Mounted, Weatherized, Single Gang Box	\$57
WCC	Wall Mounted, Weather Cover, Single Gang Box	\$78



### PB4L Push Buttons

ITEM	DESCRIPTION	PRICE
PB4L-2	1/2" Round Button, Green Illuminated Halo, Momentary, DPDT, Single Gang, Green/Red LED	\$162
PB4LA-2	1/2" Round Button, Green Illuminated Halo, Alternate, DPDT, Single Gang, Green/Red LED	\$162
PB4LAN-2	1/2" Round Button, Green Illuminated Halo, Alternate, DPDT, Narrow Stile, Green/Red LED	\$162
PB4LN-2	1/2" Round Button, Green Illuminated Halo, Momentary, DPDT, Narrow Stile, Green/Red LED	\$162



### PB5 Push Buttons

ITEM	DESCRIPTION	PRICE
PB5	2" Round Button, Illuminated, Momentary, SPDT, Single Gang, Green/Red/Handicap	\$148
PB5E	2" Round Button, Non-Illuminated, Momentary, SPDT, Single Gang, Green/Red/Handicap	\$113



### Accessories

ITEM	DESCRIPTION	PRICE
PB2-LK	2" Button, Illumination Kit for PB2E, PB5E, EEB2 Series Push Button	\$36
WBB	Wall Mounted, Weatherized, Single Gang Box	\$57
WCC	Wall Mounted, Weather Cover, Single Gang Box	\$78

## MK Mortise Key Switches

ITEM	DESCRIPTION	PRICE
MK	Momentary, SPDT, Single Gang, Green/Red LED	\$163
MK2	Momentary, DPDT, Single Gang, Green/Red LED	\$190
MKA	Alternate, SPDT, Single Gang, Green/Red LED	\$163
MKA2	Alternate, DPDT, Single Gang, Green/Red LED	\$190
MKAN	Alternate, SPDT, Narrow, Green/Red LED	\$163
MKAN2	Alternate, DPDT, Narrow, Green/Red LED	\$190
MKN	Momentary, SPDT, Narrow, Green/Red LED	\$163
MKN2	Momentary, DPDT, Narrow, Green/Red LED	\$190
MKPZ	Momentary, SPDT, Double Gang, Green/Red LED, Audible	\$244
MKAPZ	Alternate, SPDT, Double Gang, Green/Red LED, Audible	\$244



## MK Accessories

ITEM	DESCRIPTION	PRICE
MKC-KA	Mortise Cylinder for MK Series – Keyed Alike	\$99
MKC-KD	Mortise Cylinder for MK Series – Keyed Differently	\$99
MKS	Momentary, Switch Only	\$42
MKS2	DPDT Momentary, Switch Only	\$69
MKSA	Alternate, Switch Only	\$42
MKSA2	DPDT Alternate, Switch Only	\$69

## KP-1 Tubular Key Switches

ITEM	DESCRIPTION	PRICE
KP1	Momentary Switch	\$204
KP1A	Alternate Switch	\$204



### WSS Wave Sense® Hands-Free Activation Switch

ITEM	DESCRIPTION	PRICE
WSS-WSD	Wave Sense Switch, White Single/ Double Gang Faceplate	\$452



### Accessories

ITEM	DESCRIPTION	PRICE
WBB	Wall Mounted, Weatherized, Single Gang Box	\$57
WCC	Wall Mounted, Weather Cover, Single Gang Box	\$78

NOTE: WBB & WCC accessories are only compatible with the WSS-WSD Single Gang Faceplate option

### SP-1 Capacitive Touch Sense® Switch

ITEM	DESCRIPTION	PRICE
SP-1	Touch Sense® Switch	\$256
SP-1L	Label Touch Switch [SP-1]	\$13
SP-1LH	Label Touch Switch [SP-1] — Handicap Decal	\$13



## DSB Dual Sense® Egress Bar

MODEL	DESCRIPTION	BK	CL
DSB	Non-Illuminated, 36" (Standard), 42", or 48"	\$646	\$623
DSB-xxI	Illuminated, 36" (Standard), 42", or 48"	\$856	\$829
EL-DSB	Electrolynx®, Illuminated, 36" Only	\$688	\$669



## Accessories

ITEM	DESCRIPTION	PRICE
DSB-TDM	Through Door Mounting Kit for DSB	\$23
TCP-BK	Touch Bar Cover Plates — Set of 2, Black Anodized	\$114
TCP-CL	Touch Bar Cover Plates — Set of 2, Clear Anodized	\$112

## How to Order Specify quantity and the following information. Order related products separately.

CONNECTOR STYLE	MODEL SERIES	FINISH	ILLUMINATION	BAR LENGTH
<b>EL</b>	<b>– DSB</b>	<b>– CL</b>	<b>I</b>	<b>42</b>
(blank) No Connectors	DSB Dual Sense Bar	BK Black Anodized	(blank) Non Illuminated	(blank) 36" Standard Unit
EL Electrolynx® Connectors		CL Clear Anodized	I Illuminated	42 42" Length 48 48" Length

NOTE: Not every combination above is possible. Please contact the factory if you need a combination of features not listed on this page.

## TSB Touch Sense® Egress Bar

MODEL	DESCRIPTION	BK	CL
TSB	36" (Standard), 42", or 48"	\$588	\$549
TSB-xxT	Trailing Edge Timer [3 Sec.] — BK 36" only, CL 36" or 42"	\$588	\$549
EL-TSB	Electrolynx® — 36" (Standard), 42", or 48"	\$612	\$573
DTSB	Dummy with End Caps & Fasteners — 36" (Standard), 42", or 48"	\$300	\$271



## Accessories

ITEM	DESCRIPTION	PRICE
TSB-TDM	Through Door Mounting Kit for TSB	\$22
TCP-BK	Touch Bar Cover Plates — Set of 2, Black Anodized	\$114
TCP-CL	Touch Bar Cover Plates — Set of 2, Clear Anodized	\$112

## How to Order Specify quantity and the following information. Order related products separately.

CONNECTOR STYLE	MODEL SERIES	FINISH	SPECIAL FEATURES	BAR LENGTH
<b>EL</b>	<b>– TSB</b>	<b>– CL</b>	<b>T</b>	<b>– 42</b>
(blank) No Connectors	TSB Touch Sense Bar	BK Black Anodized	T Trailing Edge Timer	(blank) 36" Standard Unit
EL Electrolynx® Connectors		CL Clear Anodized		42 42" Length 48 48" Length

NOTE: Not every combination above is possible. Please contact the factory if you need a combination of features not listed on this page.

## EMB Electromechanical Egress Bar

MODEL	DESCRIPTION	BK	CL
EMB	36" (Standard), 42", or 48"	\$355	\$334
WEMB	Weather Resistant, 36" (Standard), 42", or 48"	\$392	\$369



## Accessories

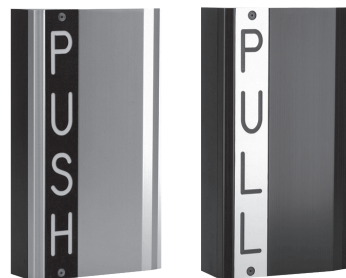
ITEM	DESCRIPTION	PRICE
TCP-BK	Touch Bar Cover Plates — Set of 2, Black Anodized	\$114
TCP-CL	Touch Bar Cover Plates — Set of 2, Clear Anodized	\$112

**How to Order** *Specify quantity and the following information. Order related products separately.*

MODEL SERIES	FINISH	BAR LENGTH
<b>EMB</b>	<b>- CL</b>	<b>- 48</b>
EMB Electromechanical Bar	BK Black Anodized	(blank) 36" Standard Unit
WEMB Weather Resistant Electromechanical Bar	CL Clear Anodized	42 42" Length 48 48" Length

## TSH Touch Sense® Handle

MODEL	DESCRIPTION	BK	CL
TSH	Push/Pull	\$579	\$569
EL-TSH	ElectroLynx® — Push/Pull	\$616	\$604

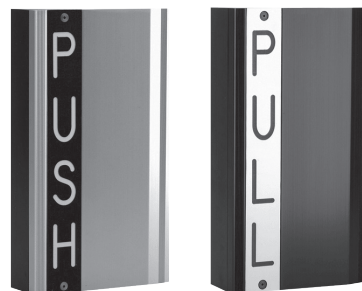


**How to Order** *Specify quantity and the following information. Order related products separately.*

CONNECTOR STYLE	MODEL SERIES	FINISH
<b>EL</b>	<b>- TSH</b>	<b>- CL</b>
(blank) No Connectors	TSH Touch Sense Handle	BK Black Anodized
EL ElectroLynx® Connectors		CL Clear Anodized

## EMH Electromechanical Handle

MODEL	DESCRIPTION	BK	CL
EMH	Push/Pull	\$627	\$600
EL-EMH	ElectroLynx® — Push/Pull		\$587



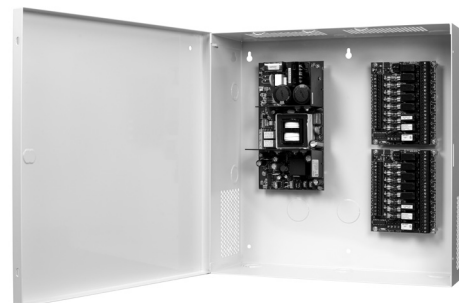
**How to Order** *Specify quantity and the following information. Order related products separately.*

CONNECTOR STYLE	MODEL SERIES	FINISH
<b>EL</b>	<b>- EMH</b>	<b>- CL</b>
(blank) No Connectors	EMH Electromechanical Handle	BK Black Anodized
EL ElectroLynx® Connectors		CL Clear Anodized

# Power

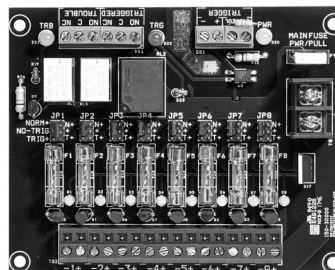
## AQD Series Power Supplies with Enclosures

ITEM	DESCRIPTION	PRICE
AQD1	1 Amp, Dual Voltage Power Supply with enclosure	\$284
AQD2	2 Amp, Dual Voltage Power Supply with enclosure	\$342
AQD4	4 Amp, Dual Voltage Power Supply with enclosure	\$385
AQD6	6 Amp, Dual Voltage Power Supply with enclosure	\$429



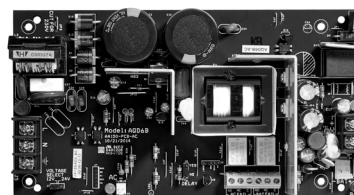
## AQD Series Distribution Boards

ITEM	DESCRIPTION	PRICE
PDB-1R	Fire Trigger / Relay Interface Board	\$55
PDB-4F2	4 Glass Fused Outputs, 2 Amp each	\$55
PDB-4C2	4 PTC Outputs, 2 Amp each	\$55
PDB-8F2	8 Glass Fused Outputs, 2 Amp each	\$65
PDB-8C2	8 PTC Outputs, 2 Amp each	\$65
PDB-8F8R2	8 Glass Fused Outputs with Relays, Fire Trigger, 2 Amp each	\$156
PDB-8C8R2	8 PTC Outputs with Relays, Fire Trigger, 2 Amp each	\$156
PDB-8C1R2	8 PTC Outputs, Fire Trigger/Relay, 2 Amp each	\$129
PDB-8F1R2	8 Glass Fuse Outputs, Fire Trigger/Relay, 2 Amp each	\$129



## AQD Series Power Supply Boards Only

ITEM	DESCRIPTION	PRICE
AQD1B	1 Amp, Dual Voltage Power Supply Board Only	\$165
AQD2B	2 Amp, Dual Voltage Power Supply Board Only	\$219
AQD4B	4 Amp, Dual Voltage Power Supply Board Only	\$260
AQD6B	6 Amp, Dual Voltage Power Supply Board Only	\$303



## Common power supply configurations for reference:

ITEM	DESCRIPTION	PRICE
AQD1-1R	1 Amp, Dual Voltage Power Supply with enclosure, Fire Trigger	\$336
AQD1-4F2	2 Amp, Dual Voltage Power Supply with enclosure, 4 outputs, 2 Amp glass fuse	\$336
AQD2-1R	2 Amp, Dual Voltage Power Supply with enclosure, Fire Trigger	\$395
AQD2-4C2	2 Amp, Dual Voltage Power Supply with enclosure, 4 outputs, 2 Amp PTC polyswitch	\$395
AQD2-8F8R2	2 Amp, Dual Voltage Power Supply with enclosure, 8 outputs, 2 Amp glass fuse, 8 relays, Fire Trigger	\$495
AQD4	4 Amp, Dual Voltage Power Supply with enclosure	\$385
AQD4-8C8R2	4 Amp, Dual Voltage Power Supply with enclosure, 8 outputs, 2 Amp PTC polyswitch, 8 relays, Fire Trigger	\$538
AQD4-8F8R2	4 Amp, Dual Voltage Power Supply with enclosure, 8 outputs, 2 Amp glass fuse, 8 relays, Fire Trigger	\$538
AQD6-8C1R2	6 Amp, Dual Voltage Power Supply with enclosure, 8 outputs, 2 Amp PTC polyswitch, 1 relay, Fire Trigger	\$556
AQD6-8C8R2	6 Amp, Dual Voltage Power Supply with enclosure, 8 outputs, 2 Amp PTC polyswitch, 8 relays, Fire Trigger	\$582
AQD6-8F8R2	6 Amp, Dual Voltage Power Supply with enclosure, 8 outputs, 2 Amp glass fuse, 8 relays, Fire Trigger	\$582

## How to Order *Specify quantity and the following information. Order related products separately.*

MODEL SERIES	OUTPUT TYPE	OUTPUT POWER	ENCLOSURE STYLE	NUMBER OF OUTPUTS	FUSE TYPE*	NUMBER OF RELAYS	FUSE SIZE
<b>AQ</b>	<b>D</b>	<b>6</b>	<b>-</b>	<b>8</b>	<b>F</b>	<b>8</b>	<b>2</b>
AQ	D Dual Voltage	1	- In Enclosure	(blank) One Output, No Distribution Board			
		2	B Circuit Board Only	4	F Glass Fuses	8R	2 2 Amp
		4		8	C PTC Polyswitch	16R	
		6		12			
				16			

\*Fuse type and size must be the same for both distribution boards for standard ordering.  
For custom configurations, please contact the factory at 800.626.7590.



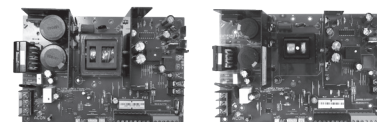
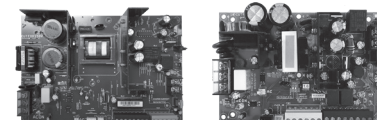
## AQL Series Power Supplies Boards without Enclosures

ITEM	DESCRIPTION	PRICE
AQL4	4 Amp at 12 VDC or 3 Amp at 24 VDC, Dual Voltage Power Supply Board Only	\$323
AQL6	6 Amp, Dual Voltage Power Supply Only	\$365
AQL102	10 Amp at 12 VDC, Single Voltage Power Supply Only	\$397
AQL104	10 Amp at 24 VDC, Single Voltage Power Supply Only	\$439



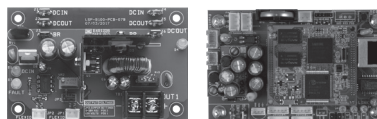
## AQL Series Modules

ITEM	DESCRIPTION	PRICE
B100	Secondary Voltage Module	\$106
D8	3 A ATO Fused Power Distribution Module	\$75
D8P	2.5 A Polyswitch Fused Power Distribution Module	\$75
R8	Lock Power Distribution Module	\$149
R8P	Lock Power Distribution Module, Class 2 Rated	\$149
M8	Netlink Managed Lock Power Distribution Module	\$409
M8P	Netlink Managed Lock Power Distribution Module, Class 2 Rated	\$409
NL4	The Netlink is a four data port network communication interface for remote power monitoring, reporting and control	\$555



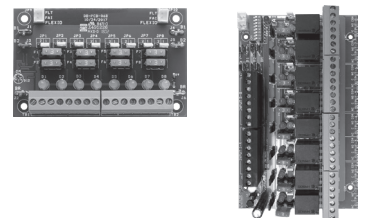
## AQL Series E-Series Enclosures

ITEM	DESCRIPTION	PRICE
E1	E1 Enclosure (14H" x 12W" x 4.5D")	\$127
E2	E2 Enclosure (20H" x 16W" x 4.5D")	\$253



## AQL Series Power Supplies with E- Series Enclosures

ITEM	DESCRIPTION	PRICE
AQL4-E1	4 Amp at 12 VDC or 3 Amp at 24 VDC Power Supply with E1 Enclosure	\$449
AQL6-E1	6 Amp, Dual Voltage Power Supply with E1 Enclosure	\$491
AQL102-E1	10 Amp at 12 VDC, Single Voltage Power Supply with E1 Enclosure	\$523
AQL104-E1	10 Amp at 24 VDC, Single Voltage Power Supply with E1 Enclosure	\$565
AQL4-E2	4 Amp at 12 VDC or 3 Amp at 24 VDC Power Supply with E2 Enclosure	\$576
AQL6-E2	6 Amp, Dual Voltage Power Supply with E2 Enclosure	\$618
AQL102-E2	10 Amp at 12 VDC, Single Voltage Power Supply with E2 Enclosure	\$650
AQL104-E2	10 Amp at 24 VDC, Single Voltage Power Supply with E2 Enclosure	\$692



## AQL Series Common Configurations

ITEM	DESCRIPTION	PRICE
AQL4-D8E1	4 Amp at 12 VDC or 3 Amp at 24 VDC Power Supply, 8 Output Auxiliary Power Distribution Module with E1 Enclosure	\$524
AQL4-R8E1	4 Amp at 12 VDC or 3 Amp at 24 VDC Power Supply, 8 Output Lock Power Distribution Module with E1 Enclosure	\$598
AQL4-B100D8E1	4 Amp, Dual Voltage Power Supply, Voltage Conversion Module and Auxiliary Power Distribution Module with E1 Enclosure	\$630
AQL4-B100R8E1	4 Amp, Dual Voltage Power Supply, Secondary Voltage Conversion Module and 8 Output Lock Power Distribution Module with E1 Enclosure	\$704
AQL4-D8NL4E1	4 Amp at 12 VDC or 3 Amp at 24 VDC Power Supply, 8 Output Auxiliary Power Distribution Module and Netlink Managed Power Communication Module with E1 Enclosure	\$1079
AQL4-B100D8NL4E1	4 Amp, Dual Voltage Power Supply, Secondary Voltage Module, 8 Output Power Distribution Module and Netlink™ Managed Power Communication Module with E1 Enclosure	\$1184
AQL4-M8NL4E1	4 Amp at 12 VDC or 3 Amp at 24 VDC Power Supply, 8 Output Managed Lock Power Distribution Module and Netlink™ Managed Power Communication Module with E1 Enclosure	\$1413
AQL4-B100M8NL4E1	4 Amp, Dual Voltage Power Supply, Secondary Voltage Module, 8 Output Managed Lock Power Distribution Module and Netlink™ Managed Power Communication Module with E1 Enclosure	\$1520
AQL4-D8M8NL4E2	4 Amp at 12 VDC or 3 Amp at 24 VDC Power Supply, 8 Output Auxiliary Power Distribution Module, 8 Output Managed Lock Power Distribution Module and Netlink™ Managed Power Communication Module with E2 Enclosure	\$1615
AQL4-B100D8M8NL4E2	4 Amp at 12 VDC or 3 Amp at 24 VDC Power Supply, Voltage Conversion Module, 8 Output Auxiliary Power Distribution Module, 8 Output Managed Lock Power Distribution Module and Netlink™ Managed Power Communication Module with E2 Enclosure	\$1721
AQL6-D8E1	6 Amp, Dual Voltage Power Supply and 8 Output Auxiliary Power Distribution Module with E1 Enclosure	\$566
AQL6-R8E1	6 Amp, Dual Voltage Power Supply and 8 Output Lock Power Distribution Module with E1 Enclosure	\$640
AQL6-B100R8E1	6 Amp, Dual Voltage Power Supply, Voltage Conversion Module and 8 Output Lock Power Distribution Module with E1 Enclosure	\$746
AQL6-D8NL4E1	6 Amp, Dual Voltage Power Supply, 8 Output Auxiliary Power Distribution Module and Netlink™ Managed Power Communication Module with E1 Enclosure	\$1121
AQL6-B100D8NL4E1	6 Amp, Dual Voltage Power Supply, Voltage Conversion Module, 8 Output Auxiliary Power Distribution Module and Netlink™ Managed Power Communication Module with E1 Enclosure	\$1226
AQL6-M8NL4E1	6 Amp, Dual Voltage Power Supply, 8 Output Managed Lock Power Distribution Module and Netlink™ Managed Power Communication Module with E1 Enclosure	\$1455
AQL6-B100M8NL4E1	6 Amp, Dual Voltage Power Supply, Voltage Conversion Module, 8 Output Managed Lock Power Distribution Module and Netlink™ Managed Power Communication Module with E1 Enclosure	\$1562
AQL6-B100D8M8NL4E2	6 Amp Dual Voltage Power Supply, Voltage Conversion Module, 8 Output Auxiliary Power Distribution Module, 8 Output Managed Lock Power Distribution Module and Netlink™ Managed Power Communication Module with E2 Enclosure	\$1837

## How to Order For additional guidance on available configurations, please visit [securitron.com](http://securitron.com)

POWER SUPPLY MODULE	SECONDARY VOLTAGE MODULE	AUXILIARY POWER DISTRIBUTION MODULE	LOCK POWER DISTRIBUTION MODULE	NETLINK MANAGED POWER MODULE	ENCLOSURE
<b>AQL4</b>	<b>-B100</b>	<b>D8</b>	<b>M8</b>	<b>NL4</b>	<b>E2</b>
<small>NOTE: The Power Supply provides a single voltage without the addition of a Secondary Voltage module (B100)</small>	<small>NOTE: The Secondary Voltage module utilizes power provided by the power supply that it is connected to and converts it to a secondary voltage; it does not provide additional power.</small>	<small>NOTE: Auxiliary Power Distribution modules provide up to (8) powered relay outputs.</small>	<small>NOTE: Lock Power Distribution modules provide up to (8) independently configurable relays outputs.</small>	<small>NOTE: The Netlink Managed Power module utilizes an embedded web application that provides monitoring, management &amp; control for compatible connected devices. This information can be accessed locally or remotely via a secure connection.</small>	
AQL4 4A @ 12VDC, 3A @ 24VDC	(blank)	D8 (1) Input   (8) Outputs	M8 Netlink Managed, (8) Inputs   (8) Outputs, (1) Configurable Output	NL4 4 Managed Outputs to connect up to 4 devices	E1 14H" x 12W" x 4.5D"
AQL6 6A @ 12VDC or 24VDC	B100 4A @ 5-18VDC	D8P (1) Input   (8) Outputs, Class 2 rated	M8P Netlink Managed, (8) Inputs   (8) Outputs, (1) Configurable Output, Class 2 rated		E2 20H" x 16W" x 4.5D"
AQL102 10A @ 12VDC			R8 (8) Inputs   (8) Outputs, (8) Configurable Outputs		
AQL104 10A @ 24VDC			R8P (8) Inputs   (8) Outputs, (8) Configurable Outputs, Class 2 rated		

## AQE Single-Port PoE Injector

ITEM	DESCRIPTION	PRICE
AQE30	MidSpan Injector, 2.6 Amp, Dual Voltage	\$264
AQE30E	MidSpan Extractor, 0.6 Amp	\$264



## PSP Plug-In Power Supplies

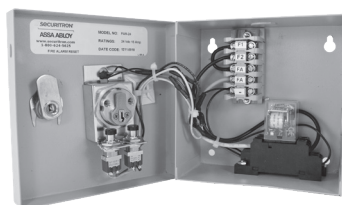
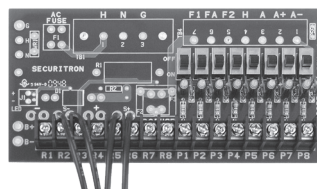
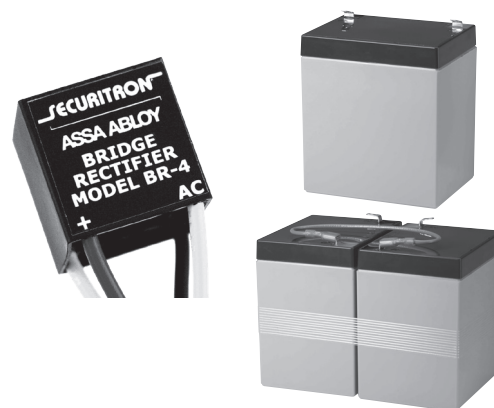
ITEM	DESCRIPTION	PRICE
PSP-12	12 VDC, 700 mA	\$83
PSP-24	24 VDC, 350 mA	\$83
PSP-12-3	12 VDC, 3 Amp	\$163
PSP-24-1.5	24 VDC, 1.5 Amp	\$163



# Additional Power Products

## Additional Power Products

ITEM	DESCRIPTION	PRICE
B-12-5	Battery — 12 VDC, 5 Amp	\$85
B-12-9	Battery — 12 VDC, 9 Ah	\$239
B-12-18	Battery — 12 VDC, 18 Ah	\$307
B-24-5	Battery — 24 VDC, 5 Amp	\$185
BR-4	Bridge Rectifier — 4 Amp	\$58
CKL	Cabinet Key Lock	\$33



# Power Transfers

## CEPT Concealed Electrical Power Transfers

MODEL	DESCRIPTION	606	612	613E	630	BSP
CEPT-10	10 Wire	\$605	\$634	\$578	\$437	\$578
CEPT-C5E	CAT-5E	\$659	\$691	\$633	\$489	\$633
CEPT-NW	No Wires	\$605	\$634	\$578	\$437	\$578
EL-CEPT	ElectroLynx® Connectors	\$698	\$732	\$671	\$524	\$671



## How to Order Specify quantity and the following information. Order related products separately.

WIRE CONNECTORS	MODEL	NUMBER OF WIRES	FINISH
<b>EL</b>	<b>– CEPT</b>	<b>– C5E</b>	<b>– 613E</b>
(blank) No Connectors	CEPT Concealed Power Transfers	(blank) 12 Wires (EL CEPT only)	(blank) 630 Satin Stainless Steel
EL ElectroLynx® Connectors		10 10 Wires	04 US04/606 Satin Brass
		C5E 9 Wires	10 US10/612 Satin Bronze
		NW No Wires	613E Dark Oxidized Satin Bronze Powder
			BSP Black Suede Powder

**NOTE:** Not every combination is possible. Please contact factory if you need a combination of features not listed above.

## SEPT Square-Cut Electrical Power Transfers

ITEM	DESCRIPTION	PRICE
EL-SEPT	ElectroLynx® Connectors (Compatible with 12-22AWG wires)	\$123
SEPT	Cut Standard Version	\$93
SEPT-10	10 Wire	\$133
SEPT-C5E	CAT-5E Compatible	\$127



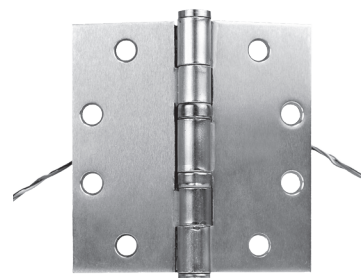
### EPT Electrical Power Transfers

ITEM	DESCRIPTION	PRICE
EL-EPT	ElectroLynx® 10" Cord, Standard Swing	\$128
EL-EPT-SC	ElectroLynx® 10" Cord, Swing Clear	\$168
EL-EPTL	ElectroLynx® 18" Cord, Standard Swing	\$155
EPT	10" Cord, Standard Swing	\$83
EPT-SC	10" Cord, Swing Clear	\$125
EPTL	18" Cord, Standard Swing	\$112



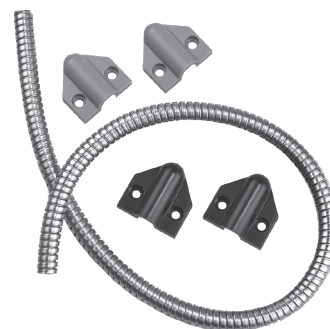
### EH Electric Hinges

ITEM	DESCRIPTION	PRICE
EH-40	6 Wire [4.5" x 4.0"]	\$329
EH-45	6 Wire [4.5" x 4.5"]	\$329



### TSB-C Door Cords

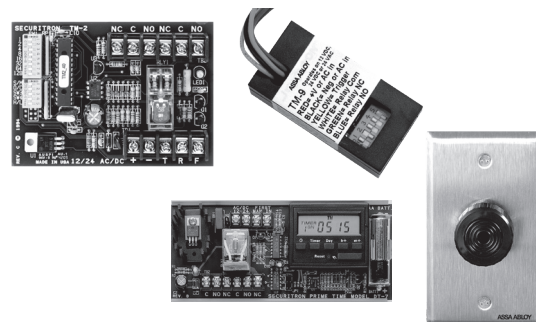
ITEM	DESCRIPTION	PRICE
TSB-C	With Caps, Gray/Black, 18"	\$45
TSB-CXL	With Caps, Gray/Black, 36"	\$55



# Accessories

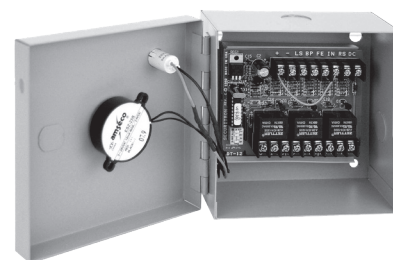
## DT-7, PZ1, TM-2 and TM-9 Timers & Alarms

ITEM	DESCRIPTION	PRICE
DT-7	Digital Timer, 7 day	\$296
PZ1	Piezo on Keyplate — Single Gang	\$90
TM-2	Multi-Function Timer, 1-255 seconds	\$185
TM-9	Time Mate Timer, 2-36 Seconds	\$95



## BA-DPA Drop Prop Alarm Monitoring

ITEM	DESCRIPTION	PRICE
BA-DPA-12	12 VDC with Boxed Alarm	\$324
BA-DPA-24	24 VDC With Boxed Alarm	\$324



## DPS Door Position Switches

ITEM	DESCRIPTION	PRICE
DPS-M-BK	For Metal Doors, Black	\$38
DPS-M-GY	For Metal Doors, Grey	\$38
DPS-M-WH	For Metal Doors, White	\$38
DPS-W-BK	For Wood Doors, Black	\$29
DPS-W-GY	For Wood Doors, Grey	\$29
DPS-W-WH	For Wood Doors, White	\$29



## MSS Magnetic High Security Door Position Switch

ITEM	DESCRIPTION	PRICE
MSS-1	Magnetic High Security Switch	\$278
MSS-1-RT	Remote Test	\$326
MSS-1C	Concealed	\$278
MSS-1C-RT	Concealed, Remote Test	\$326
MSS-1G	Surface Mount	\$278
MSS-1G-RT	Surface Mount, Remote Test	\$326



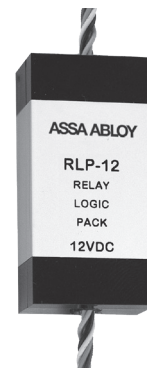
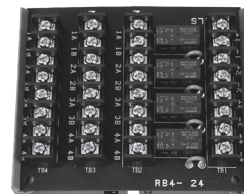
## LM Latch Monitor Status Switch

ITEM	DESCRIPTION	PRICE
LML-1	ANSI, 4-7/8, Strike, SPDT, 3 Amp	\$151
LML-2	ANSI, 4-7/8, Strike, SPDT, 3 Amp, Dual Switches	\$204
LMS-1	ANSI, 2-3/4", Strike, SPDT, 3 Amp	\$151



## RB-4, RLP Relay Boards & Logic Packs

ITEM	DESCRIPTION	PRICE
RB-4-12	Relay Board — 12 VDC	\$146
RB-4-24	Relay Board — 24 VDC	\$146
RLP-12	Relay Logic Pack — 12 VDC	\$79
RLP-24	Relay Logic Pack — 24 VDC	\$79





## Warranties

In 1999 Securitron® introduced the first no-fault, no-questions asked warranty to the industry, MagnaCare®. We believe that the best products in the industry should be supported by our commitment to deliver the highest quality products and services. This is our expectation and commitment to you – our valued customer.



**MagnaCare  
Warranty**

### MagnaCare Warranty

**Duration:** Lifetime

**Condition:** Any reason, including, but not limited to, installation error, vandalism or force majeure.

**Replacement:** Replacement product or equivalent shipped at Securitron expense via next day air freight in most cases.

**Products Covered:**

- Electromagnetic and Specialty Locks
- Power Supplies (excluding BPSS) and Power Transfers
- Push Buttons, Keypads, Keyswitches and Egress Devices

.....



**SecuriCare  
Warranty**

### SecuriCare 5-year Warranty

**Duration:** Five years from date of shipment

**Condition:** Any reason, including but not limited to, installation error, vandalism or force majeure

**Replacement:** Replacement product or equivalent shipped at Securitron's expense via next day air freight in most cases.

**Products Covered:**

- Electric Strikes & Accessories (MUNL, UNL, FSNUL)

.....



**SecuriCare  
Warranty**

### SecuriCare 3-year Warranty

**Duration:** Three years from date of shipment

**Condition:** Any reason, including but not limited to, installation error, vandalism or force majeure

**Replacement:** Replacement product or equivalent shipped at Securitron's expense via next day air freight in most cases.

**Products Covered:**

- DR100 and R100 Aperio® Wireless Card Readers
- BPSS Solar Power Supplies
- GL1 Gate Lock & Accessories
- Accessories

Check your individual product to determine warranty coverage. Batteries and consumables are not covered by Securitron Warranty programs. Replacement products, at Securitron's sole option, may be the identical item or a unit which serves as a functional replacement. If the customer has an account with Securitron or a valid credit card, the customer may order an advance replacement product, whereby Securitron will charge the customer's account for the price of the product plus next day air freight, and will credit back to the customer the full amount of the charge, including outbound freight, upon Securitron's receipt of the original product from the customer. Securitron's sole and exclusive liability, and customer's sole remedy, is limited to the replacement of the Securitron product when delivered to Securitron's facility (freight and insurance charges prepaid by customer).

## Securitron® Terms & Conditions

**PRICES:** All prices are subject to change without notice. Prices listed on the Securitron website will serve as the most current list price. All shipments will be made at prices in effect at the time of order. The customer shall be responsible for payment of all applicable sales and/or use taxes and freight costs.

**MINIMUM ORDER:** Minimum product charge per invoice is \$150.00 USD.

**PAYMENT TERMS:** Net thirty (30) days from date of invoice. Interest at the rate of up to 1-1/2% per month may be charged on all past due accounts. An order received on an account which has not been paid within 45 days of the date of invoice may not be processed until the account is current. Custom orders may require a deposit.

**DELIVERY TERMS:** All prices are Ex-works factory. Purchaser assumes the risk of loss or damage to the goods while in transit from the point of shipment. Securitron reserves the right to make delivery in installments. Installments shall be separately invoiced and paid for when due. Delay in delivery of an installment shall not relieve the purchaser of its obligation to accept remaining deliveries.

**FREIGHT POLICY:** All Purchase Orders received with a minimum net value of \$3,500 will qualify automatically for free standard freight within the continental United States. This minimum amount applies per Purchase Order to qualify and does not include free expedited freight. Qualified orders may ship partial or ship complete at your preference. Qualified orders that ship partial will not incur freight charges. All shipments that do not qualify for free freight will be charged for freight based upon our terms in effect at the time of shipment. Customers may provide their own carrier account number for expedited freight methods or for any Purchase Order to be used to cover freight costs. Minimum amounts are subject to change without notice.

**SHORTAGE:** Any claim for shortages must be made to Securitron in writing within one (1) week of receipt of merchandise.

**WARRANTY RETURNS:** A Customer Care Form (CCF) for defective product must be obtained from Securitron before any merchandise can be returned. CCF's are valid for sixty (60) days from date of issuance. Goods returned under the terms of MagnaCare® and SecuriCare® Warranties may require a copy of the original invoice.

**RETURNS:** A Customer Care Form (CCF) must be obtained from Securitron before any merchandise can be returned. CCF's are valid for sixty (60) days from date of issuance. Items that are not factory sealed, or that are returned later than 90 days from the date of receipt are subject to a restocking charge plus an additional charge for any damage.

**CANCELLATIONS:** Any order may be subject to a 5% cancellation charge for catalog items. Cancellation of non-catalog or custom items will be subject to a 20% cancellation charge plus all costs (both direct and indirect) incurred by manufacturing at the point of cancellation that are properly allocated to the cancelled item(s).

**LIMITATION OF LIABILITY:** Neither party will be liable to the other for any delay or failure in performance arising directly out of war, sabotage, insurrection, riot, and any other act of civil disobedience, act of public enemy, fire, explosion, flood, storm, or other act of God or nature, or similar cause beyond its reasonable control, including shortage or unavailability of labor or materials. If, notwithstanding the foregoing limitations, Securitron has any liability to the purchaser, the purchaser agrees that the total liability to the purchaser for all losses, damages, and causes of action, whether in contract, equity, tort (including without limitation, negligence and gross negligence), or otherwise, will not exceed the amount the purchaser paid to Securitron for the products (including, without limitation, incidental or consequential damages, damages for lost profits or business interruption, and punitive damages).

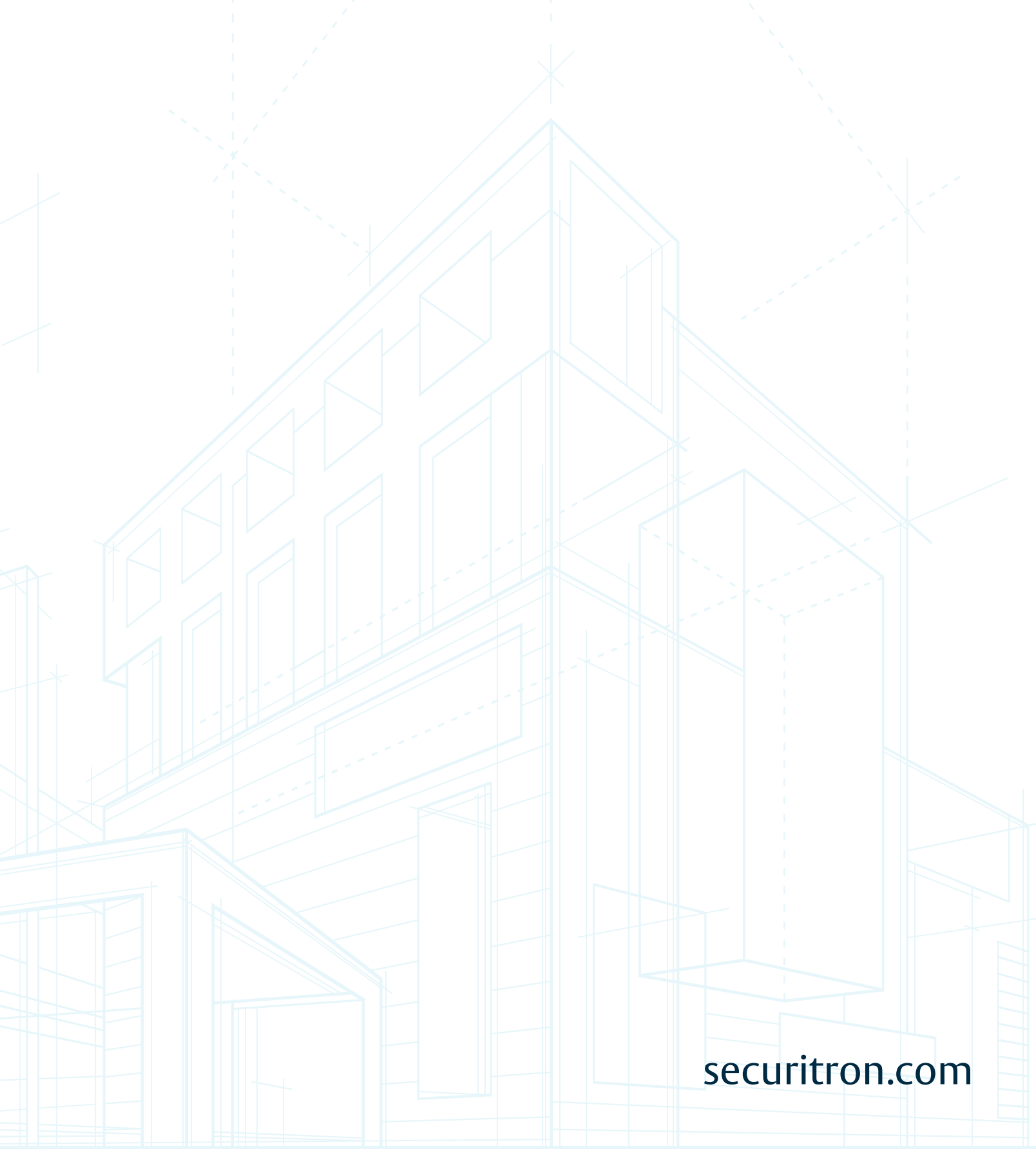
**NO THIRD PARTY LIABILITY:** If the purchaser uses the Securitron Products on behalf of others or provides to others any products referenced herein, the Securitron Parties shall have no liability to such persons whatsoever, and the purchaser agrees to defend and indemnify the Securitron Parties from any and all claims and demands asserted against them, and from any legal fees, costs and other expenses that the Securitron Parties incur therewith.

**EXPORT CONTROL AND SANCTIONS:** The Customer represents and warrants to Securitron that it will always act in compliance with Economic Sanctions and Export Control Laws, and that:

- a. neither the Customer, its affiliates, or any of their respective directors, officers, employees nor, so far as the Customer is aware, any agents or other persons acting on behalf of any of the foregoing:
  - i. is, or has been, a Listed Person;
  - ii. has engaged in any business dealings or activities that would reasonably be expected to result in it becoming a Listed Person;
  - iii. directly or indirectly, has conducted or is conducting any business dealings or activities with or for the benefit of, or is otherwise involved in any business with a Listed Person, or otherwise acting in violation of Economic Sanctions and Export Control Laws;
  - iv. has engaged or is engaging in any transaction that circumvents, evades or avoids, or has the purpose or effect of circumvention, evading or avoiding, or attempts to violate, any Economic Sanctions and Export Control Laws; or
  - v. is, or has been, in violation of, or subject to, any investigation or enquiry by, or on behalf of, any governmental or other regulatory body relating to Economic Sanctions and Export Control Laws.
- b. the Customer shall act in compliance with Economic Sanctions and Export Control Laws, and shall not sell nor re-export the Product without all requisite licenses and approvals under Economic Sanctions and Export Control Laws;
- c. the Customer shall not sell, export or re-export, the Product, directly or indirectly, to the Russian Federation or Belarus or for use in the Russian Federation or Belarus (whether or not permitted under Economic Sanctions and Export Control Laws applicable to the Customer);
- d. the Customer shall undertake its best efforts to ensure that the purpose of this Clause is not frustrated by any third parties further down the commercial chain, including by possible resellers;
- e. the Customer agrees to (i) cascade the contractual obligations set forth in this Clause. in contracts with third parties, including possible resellers, further down the commercial chain.; and (ii) set up and maintain an adequate monitoring mechanism to detect conduct by any third parties further down the commercial chain, including by possible resellers, that would frustrate the purpose of this Clause;
- f. the representations and warranties set forth in this Clause shall always remain true and correct;
- g. the Customer will provide written notice to Securitron as promptly as possible and in any event within five business days, if (i) any representation or warranty should cease to be true at any time., or (ii) the Customer should encounter any problems in applying Clauses b)- e), above, including any relevant activities by third parties that could frustrate the purpose of said clause; and
- h. the Customer will not engage in any transaction for Military End-Use unless explicitly approved by Securitron.
- i. The Customer will provide all information relating to requests for Products, that the Customer suspects could violate or circumvent Economic Sanctions and Export Control Laws, including requests from or on behalf of a Listed Person, and other attempts to acquire Securitron products in violation of Economic Sanctions and Export Control Laws. The Customer will, to the best of its abilities, cooperate with Securitron to facilitate compliance with Economic Sanctions and Export Control Laws and will upon Securitron request provide Securitron with true, complete and correct copies of all documentation relating to any business dealings involving the Product, including but not limited to, end-user certifications, information concerning compliance with the obligations under Clause. b)- e), and other information as may be required by Securitron within two weeks of the simple request of such information.

Securitron shall not be obliged to make any payment or take any other action if Securitron believes in good faith that such action may constitute a violation, contribute to a violation, or constitute a circumvention of any Economic Sanctions and Export Control Laws.

**COMPLIANCE WITH ANTI-TRUST, ANTI-CORRUPTION AND DATA PRIVACY LAWS:** The Customer, its directors, officers, and employees shall perform their obligations under these Terms and Conditions in full compliance with the ASSA ABLOY Code of Conduct which is accessible online at: <https://www.assaabloy.com/group/en/sustainability/code-of-conduct/code-of-conduct-business-partners>



[securitron.com](https://securitron.com)



**SECURITRON**

**ASSA ABLOY**

The ASSA ABLOY Group is the global leader in access solutions. Every day we help people feel safe, secure and experience a more open world.

**securitron.com**

**USA**

800 626 7590 | f. 866 582 4641 | [securitron.com](https://securitron.com)  
[customerservice.securitron@assaabloy.com](mailto:customerservice.securitron@assaabloy.com)  
[techsupport.securitron@assaabloy.com](mailto:techsupport.securitron@assaabloy.com)  
[orders.securitron@assaabloy.com](mailto:orders.securitron@assaabloy.com)

**CANADA**

800 461 3007 | f. 800 461 8989 | [assaabloydss.ca](https://assaabloydss.ca)  
[sales.dss.ca@assaabloy.com](mailto:sales.dss.ca@assaabloy.com)  
[orders.dss.ca@assaabloy.com](mailto:orders.dss.ca@assaabloy.com)

Printed in the U.S. A.

Patent pending and/or patent [www.assaabloydss.com/patents](https://www.assaabloydss.com/patents)

Copyright © 2025, Hanchett Entry Systems, Inc., an ASSA ABLOY Group company. All rights reserved. Reproduction in whole or in part without the express written permission of Hanchett Entry Systems, Inc. is prohibited. SEC-115-0325